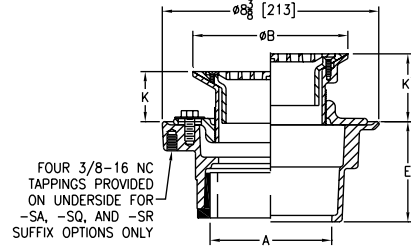


# Z415 BODY ASSEMBLY WITH "TYPE H" STRAINER



## ENGINEERING SPECIFICATION

Zurn ZN415H floor and shower drain features Dura-Coated cast iron body with bottom outlet, combination invertible membrane clamp and adjustable collar with seepage slots, and "TYPE H" polished, nickel bronze light-duty strainer with flashing clamp device for clamping at the finished floor level.



Strainer Designation	Dimensions in inches [mm]						Str. Open Area sq in [cm <sup>2</sup> ]	Approximate Weight lb [kg]
	A Pipe Size	B Diameter	K		K'			
			Min.	Max.	Min.	Max.		
-6H	2 [51], 3 [76], 4 [102]	6 [152]	1-1/4 [32]	2-3/8 [60]	2-3/16 [56]	3-5/16 [84]	7 [45]	13 [6]
-9H		9 [229]	1-11/16 [43]	2-5/8 [67]	2-7/16 [62]	3-9/16 [90]	18 [116]	20 [9]

PREFIXES	DESCRIPTION	STRAINER DESIG.	PIPE SIZE	LIST PRICE
<b>ZN415*</b>	D.C.C.I. Body Assembly with Polished Nickel Bronze Top	-6H	2", 3", 4"	<b>1,582.00</b>
		-9H	2", 3", 4"	<b>2,022.00</b>
<b>ZB415</b>	D.C.C.I. Body Assembly with Polished Bronze Top	-6H	2", 3", 4"	<b>1,425.00</b>
		-9H	2", 3", 4"	<b>1,811.00</b>
<b>Z415</b>	D.C.C.I. Body Assembly ONLY (add "-L/Top" to product sku)	No Strainer	2", 3", 4"	<b>194.00</b>

OUTLETS (SPECIFY PIPE SIZE IN INCHES AND TYPE OF OUTLET)				
OUTLET TYPE		PIPE SIZE/ OUTLET TYPE	E BODY HT. DIM.	ADD
<b>IP</b>	Threaded	2IP	2-7/16"	<b>80.00</b>
		3IP	2-3/4"	<b>80.00</b>
		4IP	2-13/16"	<b>80.00</b>
<b>NH</b>	No-Hub	2NH, 3NH, 4NH	3-13/16"	<b>N/C</b>
<b>NL</b>	Neo-Loc	2NL, 3NL, 4NL	3-7/8"	<b>N/C</b>

SUFFIXES		ADD	
<b>-AR</b>	Acid Resisting Epoxy Coated Cast Iron	<b>171.00</b>	
<b>-G</b>	Galvanized Cast Iron	<b>198.00</b>	
<b>-P</b>	Trap Primer Connection (1/2")	<b>N/C</b>	
Ⓢ <b>-SA</b>	Stabilizer Assembly (See Z1035)	<b>138.00</b>	
Ⓢ <b>-SQ</b>	Stabilizer Q-Deck (See Z1035-Q)	<b>184.00</b>	
Ⓢ <b>-SR</b>	Stabilizer Ring (See Z400-SR)	<b>121.00</b>	
Ⓢ <b>-TC</b>	Neo-Loc Test Cap Gasket (2", 3", 4" NL Bottom Outlet Only)	<b>24.00</b>	
<b>-U</b>	1"-3" High Extension Adapter (See Z400-U)	D.C.	<b>140.00</b>
		Galv.	<b>306.00</b>
	For each additional 1" above 3"	<b>98.00</b>	
<b>-V</b>	Backwater Valve (Not Available with -Y)	<b>380.00</b>	
<b>-VP</b>	Vandal-Proof Secured Top	<b>58.00</b>	
<b>-Y</b>	Sediment Bucket (Not Available with -V)	<b>109.00</b>	

BEST SELLERS	LIST PRICE
ZN415-2NH-6H	<b>1,582.00</b>
ZN415-2NH-6H-P	<b>1,582.00</b>
ZN415-2NL-6H	<b>1,582.00</b>
ZN415-4NH-6H	<b>1,582.00</b>
ZN415-4NH-6H-SA	<b>1,707.00</b>

Supplied By:



**877-903-7246**

[www.commercialplumbingsupply.com](http://www.commercialplumbingsupply.com)

\*Regularly furnished unless otherwise specified.

Items designated as Best Sellers are most specified and are generally in stock for shipment.

Ⓢ This symbol denotes a product that is engineered to reduce installation and rework time.

For additional product information, please visit [www.zurn.com](http://www.zurn.com)

INTRO ROOF DRAINS FLOOR DRAINS T, P, BW VALVES INTERCEPTORS CARRIERS HYDRANTS CLEANOUTS W/HA SS DRAINS FAB SS DRAINS SAN-FLOOR TECH INFO